

# Instruction manual for Salto H-101 4m

You will need this or similar servos and accessories

Ailerons: 2x HS-125MG  
Flaps/Brakes: 2x HS-225MG  
V-Tail: 2x HS-125MG

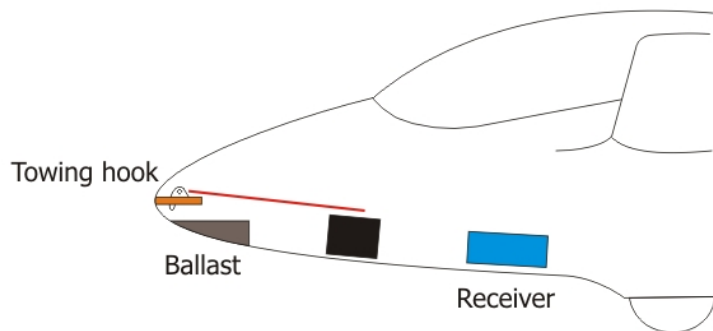
All servo holders are made for HITEC® servos.

6m servo cable (min. 0,34mm<sup>2</sup>), 2 pairs MPX connectors (6-pin), JR/FUT connectors, etc.

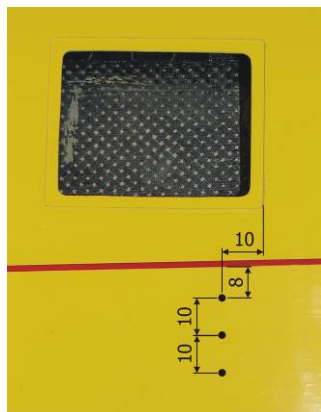
Horns (all horns glue with 5-min Epoxy):



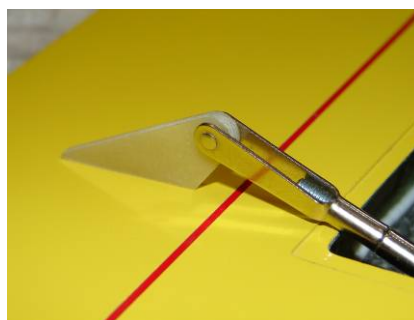
## Fuselage



## Ailerons



Drill holes ø2,8mm



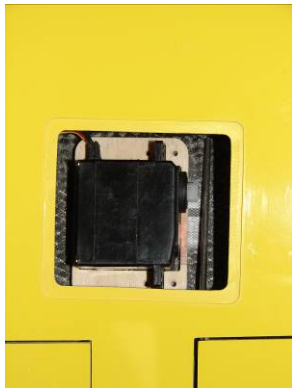
Glue horn with 5-min Epoxy



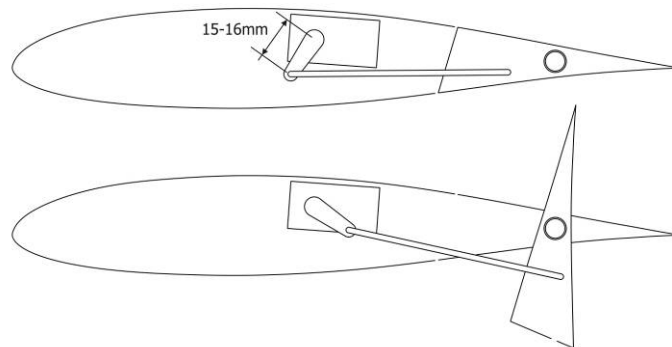
Glue servo holder and install servo

For linkage use M3 screw rod with M3 metal clevises.

## Brakes/Flaps

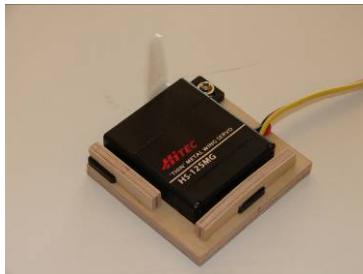


Glue servo holder



## V-Tail

Servo holders are made for HITEC HS-125MG or GRAUPNER DS3810 servos.



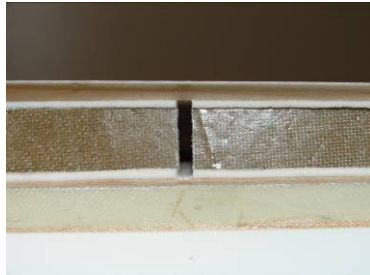
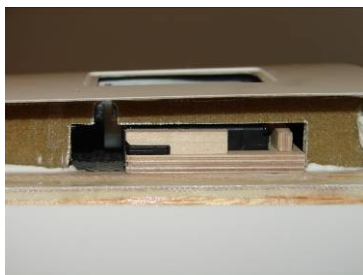
Servo holder



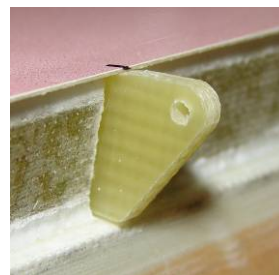
Position in V-Tail



Make hole for servo cable



Make hole for horn



Glue horn with 5-min Epoxy

For V-Tail linkage use two M2 metal clevises with M2 screw rod or 1,6mm wire.

Basic set-up for Salto H-101 4m (- up, +down):

CG: 75÷85mm from LE at the root  
Ailerons: -20÷25mm, +12÷15mm  
Elevator: ±20÷25mm  
Rudder: ±25÷30mm  
Brakes: up to 80° (landing)  
Flaps: +5÷8mm (thermal), up to 20mm (landing)

Mix: Ailerons → Rudder ±15mm  
Mix: Brakes → Elevator +5÷6mm